

TALKING POINTS: CONNECTIVITY

NETWORK CABLING

COPPER

- Adapters
- Bulk Cabling
- Cables and Jacks
- Couplers
- Patch Panels

FIBER

- Cables
- Couplers
- Patch Panels

FIBER TRANSCEIVERS

- LC Duplex
- QSFP+
- RJ45
- SFP+

POE PRODUCTS

- Extenders
- Injectors
- Jacks
- Panels
- Switches

PRO AV

- Adapters and Converters
- Analog and Digital
- Audio/Video Products
- Cables
- Couplers and Gender Changers

- Digital Signage and Display Solutions
- Direct-Connect
- Display Mounts
- HDBaseT

- Jacks and Panels
- Multi-Viewer Switches
- Over Cat5e/6/6a
- Splitters and Extenders

DESKTOP MOBILITY

- Adapters and Adapter Cables
- Desktop Chargers
- Docking Stations

- Hubs and Switches
- Lightning Cables
- Monitor Mounts

- USB-C™ and Thunderbolt™ 3 Solutions

KVM SOLUTIONS

- Console Servers
- Desktop KVMs
- IP Remote Access KVMs

- KVM Accessories
- Rack-Mount KVMs
- Rack-Mount LCDs

- Secure KVMs with NIAP Certification

Applications Engineering Team:
773.869.1236 · solutions@trippite.com



Powering and Connecting Your World

TALKING POINTS: COPPER SOLUTIONS

CABLES

Technologies:

- Cat5/5e
- Cat6/6a
- T1 Shielded

Colors:

- Aqua
- Beige
- Black
- Blue
- Gray
- Green
- Orange
- Purple
- Red
- Silver
- White
- Yellow

Shieldings:

- STP
- UTP

Options:

- Patch Cables
- Cross-Over Cables
- Straight or Angled Connectors
- Solid-Core
- Stranded
- Bulk Cabling (Up to 1000 ft.)
- Plenum-Rated
- TAA-Compliant
- PoE-Compliant
- Standard- or Industrial-Grade
- Customization Available



PATCH PANELS

Technologies:

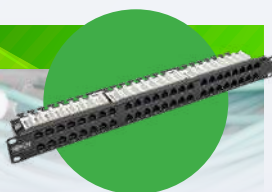
- Cat5/5e
- Cat6/6a
- DisplayPort
- HDMI
- MTP/MPO
- Multimode
- USB 2.0 (High Speed)
- USB 3.0 (SuperSpeed)

Connectors:

- 110 IDC
- Keystone Jack Cutout
- Krone IDC
- RJ45 (Female)

Options:

- Up to 48 Ports
- Straight or Angled
- Horizontal or Vertical Orientation
- Hinged or Unhinged
- Shielded or Unshielded
- Wall-Mount
- Rack-Mount
- TAA-Compliant
- Standard- or Industrial-Grade



USB ADAPTERS

Technologies:

- Cat5/5e
- Cat6/6a
- DVI
- DisplayPort
- HDMI
- USB
- USB 2.0 (High Speed)
- USB 3.0 (SuperSpeed)
- USB 3.1 (Gen 1)
- VGA/SVGA

Connectors:

- DVI-D Dual-Link (Male)
- DVI-I Dual-Link (Female)
- HD15 (Female)
- HD15 (Male)
- HDMI (Female)
- Mini DisplayPort (Male)

- RJ45 (Female)
- USB-A (Male)
- USB-C (Female)
- USB-C (Male)
- Right-Angle USB-C (Male)

Colors:

- Black
- Silver
- White

Options:

- Up to 6 Ports
- TAA-Compliant
- PoE-Compliant
- Standard- or Industrial-Grade



COUPLERS

Technologies:

- Cat5/5e
- Cat6/6a
- DisplayPort
- HDBaseT
- HDMI
- Modem
- Multimode
- RG59/RG6
- Singlemode
- USB
- USB 2.0 (High Speed)
- USB 3.0 (SuperSpeed)
- USB 3.1 (Gen 1)

Connectors:

- 110 IDC
- BNC (Female)
- LC Duplex (Female)
- LC Duplex (Male)
- RJ11 (Female)
- RJ45 (Female)
- SC Duplex (Female)
- ST Duplex (Female)
- USB-A (Female)
- USB 3.0 A (Female)

Options:

- Standard
- Industrial Grade



KEYSTONE JACKS

Technologies:

- Cat5/5e
- Cat6/6a
- Component
- Composite
- DisplayPort
- Multimode
- RG59/RG6
- Stereo Audio
- USB
- USB 2.0 (High Speed)
- USB 3.0 (SuperSpeed)
- USB 3.1 (Gen 1)

Connectors:

- 110 IDC
- BNC (Female)
- DisplayPort (Female)
- LC Duplex (Female)
- Mini DisplayPort (Female)
- RCA (Female)
- RJ45 (Female)
- Screw Terminal
- USB-A (Female)
- USB-A (Male)
- USB 3.0 A (Female)
- USB 3.0 A (Male)



Applications Engineering Team:
773.869.1236 · solutions@triplite.com



Powering and Connecting Your World

TALKING POINTS: CONNECTIVITY

Power over Ethernet (PoE) Products

PoE provides power and network connectivity over a single Ethernet cable. This makes it ideal for powering and connecting security cameras, wireless access points (WAPs), VoIP telephones, POS systems and other IP devices. PoE gives you the flexibility to install equipment where you need it, while reducing overall cost and complexity.

As a global leader in power and connectivity solutions, Tripp Lite offers a wide variety of products for PoE installations.

CABLES



TECHNOLOGIES:

- Cat5e
- Cat6/6a
- Cat8

UL CMR-LP CERTIFICATION

TYPES:

- Bulk Cabling
- Snagless
- Shielded

SHIELDINGS:

- STP
- UTP
- F/UTP

COLORS:

- Aqua
- Black
- Blue
- Gray

POE SWITCHES



FORM FACTORS:

- Desktop
- Rack Mount

PORT TYPES:

- 10/100/1000 (RJ45)
- Combo RJ45/SFP
- Console (RJ45)
- Dedicated SFP

OPTIONS:

- Up to 27 Ports
- Managed
- Unmanaged
- Built-In PDUs

SPLITTERS AND EXTENDERS



TECHNOLOGIES:

- Cat5/5e
- Cat6/6a

CONNECTORS:

- RJ45 (Female)
- RJ45 (Male)
- USB Micro-B (Female)
- USB Micro-B (Male)

COLORS:

- Black
- Silver

POE-SAFE JACKS



TECHNOLOGIES:

- Cat5/5e
- Cat6/6a

CONNECTORS:

- 110 IDC
- RJ45 (Female)

OPTIONS:

- In-Line
- Panel-Mount
- Punch Down
- Standard or Industrial Grade
- TAA-Compliant
- Toolless

POE INJECTORS



TECHNOLOGIES:

- Cat5e
- Cat 6/6a

CONNECTORS:

- RJ45 (Female)
- C14

POE-SAFE PANELS



TECHNOLOGIES:

- Cat5/5e
- Cat6/6a

CONNECTORS:

- Keystone Jack Cutout
- RJ45 (Female)

OPTIONS:

- Rack Mount
- Wall Mount
- Standard or Industrial-Grade
- Up to 48 Ports
- 1U or 2U

DON'T FORGET TO COMPLETE THE SOLUTION!

- UPS Systems
- Surge Protectors
- Racks and Enclosures
- Tools and Testers

Visit triplite.com to learn more!

Applications Engineering Team:

773.869.1236

solutions@triplite.com



Powering and Connecting Your World

TALKING POINTS: CONNECTIVITY

FIBER SOLUTIONS

CABLES



TECHNOLOGIES:

- Mode Conditioning
- MTP/MPO
- Multimode
- Singlemode

COLORS:

- Aqua
- Blue
- Gray
- Green
- Light Gray
- Lime
- Magenta
- Red
- White
- Yellow

CONNECTORS:

- 12-Strand MTP (Male/Female)
- 24-Strand MTP (Female)
- 62.5 Bulk
- FC Duplex
- LC Duplex (Male/Female)
- LC Duplex w/ Push Pull Tab
- Mini LC Duplex (Male)
- MTRJ Duplex (Male)
- SC Duplex (Male/Female)
- ST Duplex (Male/Female)

SHIELDINGS:

- UTP

MODES:

- OM1
- OM2
- OM3
- OM4
- OM5

OPTIONS:

- Patch Cables
- Solid-Core
- Stranded
- Bulk Cabling (Up to 1000 ft.)
- Outdoor-Rated
- Plenum-Rated
- TAA-Compliant
- PoE-Compliant
- Customization Available

MEDIA CONVERTERS



TECHNOLOGIES:

- Cat5/5e
- Cat6/6a
- Multimode
- RG59/RG6
- Singlemode

CONNECTORS:

- LC Duplex (Female)
- RJ45 (Female)
- SC Duplex (Female)

COLORS:

- Black

OPTIONS:

- Standard or PoE-Compliant

PATCH PANELS



TECHNOLOGIES:

- Cat5/5e
- Cat6/6a
- MTP/MPO
- Multimode
- SFP+/QSFP+/QSFP28
- Singlemode

CONNECTORS:

- 8-Strand MTP (Male/Female)
- LC Duplex (Female)
- MTP (Female)
- SC Duplex (Female)
- ST Duplex (Female)

OPTIONS:

- Up to 36 Ports

COUPLERS



TECHNOLOGIES:

- Cat5/5e
- Cat6/6a
- DisplayPort
- HDBaseT
- HDMI
- Modem
- Multimode
- RG59/RG6
- Singlemode
- USB
- USB 2.0 (High Speed)
- USB 3.0 (SuperSpeed)
- USB 3.1 (Gen 1)

CONNECTORS:

- 110 IDC
- BNC (Female)
- LC Duplex (Male/Female)
- RJ11 (Female)
- RJ45 (Female)
- SC Duplex (Female)
- ST Duplex (Female)
- USB 2.0 A (Female)
- USB 3.0 A (Female)

OPTIONS:

- Standard- or Industrial-Grade
- Zero Ports or 1 Port

FIBER TRANSCEIVERS



TECHNOLOGIES:

- SFP+/QSFP+/QSFP28

CONNECTORS:

- LC Duplex (Female)
- RJ45 (Female)
- SFP+ (Male)

ADAPTERS



TECHNOLOGIES:

- Cat5/5e
- Cat6/6a
- DB25
- DisplayPort
- DVI
- HDMI
- Modem
- MTP/MPO
- Multimode
- Null Modem
- Parallel
- Serial (RS-232)
- Singlemode
- USB 2.0 (High Speed)
- USB 3.0 (SuperSpeed)
- USB 3.1 (Gen 1)
- VGA/SVGA

CONNECTORS:

- 12-Strand MTP (Male/Female)
- DB25 (Female)
- DB9 (Male/Female)
- HDMI (Female)
- LC Duplex (Male/Female)
- RJ45 (Male/Female)
- SC Duplex (Female)
- ST Duplex (Female)
- USB-C (Male)

COLORS:

- Beige
- Black
- Blue
- Light Gray
- Magenta
- Orange
- Silver
- White
- Yellow

MODES:

- OM4

OPTIONS:

- Up to 5 Ports

Applications Engineering Team:

773.869.1236

solutions@tripplite.com



Powering and Connecting Your World